

Adjustable Temperature Foam Cutter

Please read the enclosed safety and operating instructions before you use this machine the first time in order to ensure safe and proper handling. Failure to follow all instructions may result in electric shock, fire and/ or serious injury.

Save all safety and operating instructions for future reference. If you need to hand over the cutter, please hand over the enclosed documents.

Functional Descriptions

Thanks to the temperature adjusting button on the handle of the Foam Cutter . Users can adjust the temperature according to their need . Variety of accessories and desktop holder make precise and convenient cuts. It allows users to work more easily on advertising words making, art model making and various foam cutting projects and engraving projects.

Application

- 1.Foam cutting, engraving, wedding background production;
- 2.Sand table, aviation model, Lost Foam making;
- 3.Advertising word making, foam crafts making;
- 4.Secondary use of waste foam;
- 5.Suitable for large school projects, craft hobbies and families.

Package Included

SP08: Cutting Handle*1, Long Cutting Tip*1, U-shaped Foam Cutting Tip*1, Hot Wire Tip*1, 10 m Replacement Wire for Bow*1, Engraver Tip*1, Desktop Holder*1, AC adaptor *1, Black Marker Pen*1, ,Instruction*1

Note : It is a full set of accessories for SP08 on the manual. Maybe you just selected some of them according to your own need .Please refer to the actual kits that you bought .

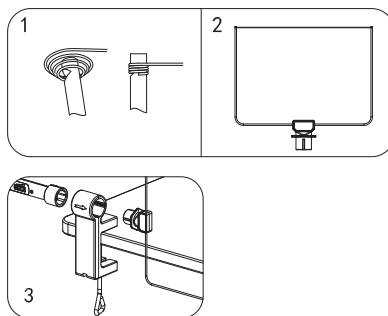
Technical Data

Product Model	SP08
Input Voltage	AC 100-240V
Output Voltage	DC 9V
Replacement Wire for Bow	10 m
Long Cutting Tip	120 mm
Length of Wire for Bow	170 mm
Net Weight	405 g

Safety Warnings

- 1.Please check whether the accessories of our products are complete and whether the products are damage. Any question, please contact us immediately.
- 2.It's a normal phenomenon that producing smoke when you are using this product, please do not worry! Suggest using in a well ventilated space.
- 3.Be careful! Do not touch the heating part when power is on. Please turn off the tool when not in use.
- 4.If the users are children please use the products under adult supervision.

Operations



- 1.Replace the heating wire for bow (Fig.1&Fig.2&): Please wind the heating wire for 4-5 circles in the grooves at both ends of the bow, when winding, please slightly tighten the hot wire tip. After winding, the bow is about 170mm
- 2.Install desktop holder (Fig.3): Fix the desktop holder on the edge of the desk. Tighten the triangular handle. Please don't over tighten to avoid damaging the desktop holder. In Fig.3, insert cutting handle and cutting bow and adjust the direction of bow.

How to use

- 1.Plug the AC adaptor into the power socket .Connect the DC plug of the adaptor into the DC port at the end of the product handle .
- 2.Please select the cutting tip you need, and assemble it into the head of the handle.
- 3.Please push the switch on the handle to the mark “-” .The heating needle of the cutting pen starts up to heat up, and then it can be used.
- 4.The cutting effect would be better if you use the marker pen to draw the shape before cutting operation.
- 5.You can slide the temperature button to choose the temperature that you need when you need cutting precisely and slowly .
- 6.Warm-up time depends on the cutting tips that you assembled. It will takes 5-45 seconds to finish warm-up.
- 7.Please push the switch on the handle to the mark “o” firstly when changing other cutting tip. After cooling, remove the cutting tip and change others.
- 8.Please do not change the cutting tip while the switch on the mark “-” .

Maintenance

- 1.Please avoid moisture or water for usage and storage. When storing, please remove the cutting tip. Because of various accessories, it is recommended to keep in the original container. Heating head and cutting tip are quick-wear parts. If the cutting tip and engraver tip are not heating due to overused, please contact us via website to buy new welded joint or new foam cutter .